

LD43DRG

MINIATURE DEEP RECESSED TRIMLESS
EXTERIOR UPLIGHT WITH GLASS BEZEL



CB | RLE | R + R | MOISTURE GUARD



The LD43DRG is a miniature, ultra-deep recessed, LED in-ground uplight. The LED and optics are recessed at 33mm into the body for super low glare, which can be further reduced with an optional glare shield. Due to the miniature aperture of the LD43DRG, it is available in a narrow 12° beam only, offering defined edges, ideal for lighting doorways or narrow corridors. Featuring a high-quality, seamless glass top, the LD43DRG blends perfectly into its surroundings.



KEY FEATURES

- > High-power C1 engine with NICHIA LED delivering up to 137lm
- > Miniature fitting with LED and optics deep recessed 33mm for reduced glare
- > Available with a narrow 12° beam only due to the size of the aperture
- > Durable all glass bezel, suitable for a wide range of applications
- > Optional glare shield accessory for further reduced glare
- > Hidden fixing options include a rebate sleeve with O-ring or trimmed sleeve with O-ring. Also available with a ground tube
- >  Contains our integral moisture guard (anti-wicking barrier), stopping water ingress from going up the cable into the product from incorrect IP-rated connections
- > Switched, 0-10V, Casambi, DMX, DALI or Mains dimmable drivers available



DIMENSIONS

Dimensions in mm

For fixing dimensions please go to page 3.



WHITE LED ENGINE SPECIFICATION

Engine	 C1		
Beam angles	12°		
LED manufacturer	NICHIA		
Colour temperature	2200K / 2700K / 3000K / 4000K / 5000K		
Current	350mA [1.2W]	500mA [1.7W]	700mA [2.4W]
Typical LED Circuit wattage	1.1W	1.6W	2.3W
Delivered lumens (L ₁₀₀)*	63	82	137
Lumens per circuit watt	53	48	57
Forward voltage (V ₁₀₀)	3V	3.2V	3.4V
CRI (Typ)	93		
Colour consistency	2 SCDM		
Peak intensity	9788 cd		
LED Lumens	206		
LOR	0.67		
TM30	RF93	RG99	
UGR***	14.9		
LED lifetime	L90B5 at 90,000hrs		
Applications			

This data is based on LD43DR-C1-700-LW30-NB

*Lumen output data applies to all colour temperatures

**Indicates the nominal power for the LED run at that particular current and includes losses associated with using an 85% efficient driver

*** UGR values based on room parameters of 4H 8H, C70 W50 F20

MECHANICAL

	350mA	500mA	700mA
Ambient temperature ○ 55°C	-20°C to 55°C	-20°C to 50°C	-20°C to 35°C
Glass	3mm thick borosilicate glass with ceramic screen print		
Materials	Black anodised aluminium body with black anodised bezel and glass front		
Weight of product	0.015kg		
IP rating	IP66		
Wiring	In-series constant current wiring (pre-wired with 2 core cable at a length of 250mm)		

ENVIRONMENTAL

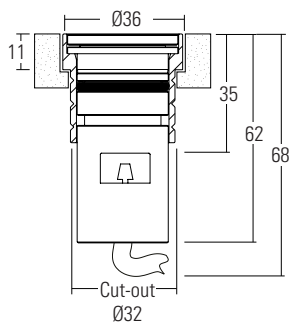
TM65	Available on request		
TM66	2.7		
Repair + Refurbish	 This product is included in our Repair and Refurbish scheme. This offers customers the ability to send back products to us for repair or refurbishment to extend their life without having to buy new fittings.		
RLE (REPLACEABLE LIGHT ENGINE)	  Visit page 5 for replacement parts		

DIMENSIONS AND FIXING ACCESSORIES

Dimensions in mm

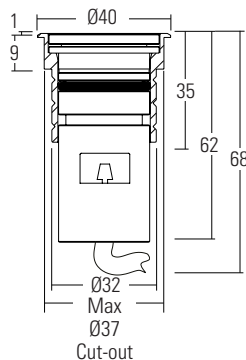
/480SG Rebate trimless fixing sleeve and O-Ring

A robust and water tight method of fixing, for in ground applications. Mounting surface will require an 11mm rebate to allow for flush installation. Fixing ring available with a passivated stainless steel or powder coat black finish.*



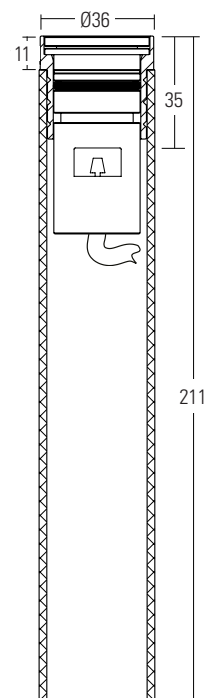
/480TRG Minimalist Trimmed Sleeve and O-Ring

A robust and water tight method of fixing, with trimmed edge bezel for easy installation due to no rebate being required. Fixing ring available with a passivated stainless steel or powder coat black finish.*



/480GTG Ground tube

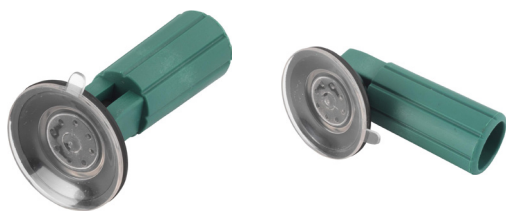
The in-ground tube has been designed for applications where a recessed uplighter is required in soil or gravel terrain, and can also be used in concrete. The tube can be buried with the necessary wiring, and then the fitting installed after the landscaping work has been completed. It is supplied with the fixing sleeve bonded into the tube, and can be cut down on site. Fixing ring available with a passivated stainless steel or powder coat black finish.*



*NOTE: Powder coat black paint finish is not suitable for high-traffic areas.

/HT-44-G Trimless Family Hand tool

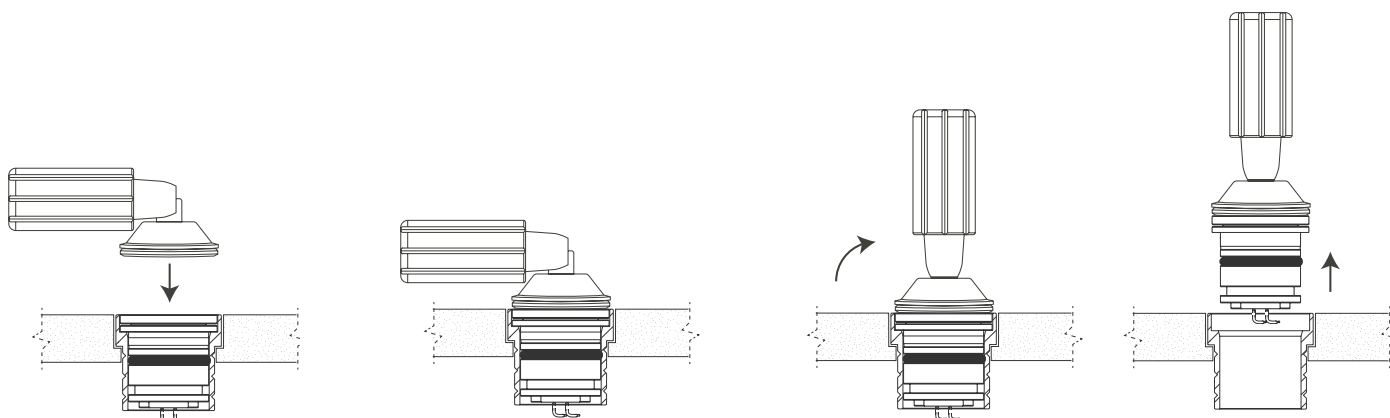
We supply our Trimless family fittings with a hand tool for easy installation and removal. Use the /HT-44-G suction cup or a similar suction tool for the removal of the fittings from their fixing options. Please contact your LightGraphix sales representative for more information.



How to use the hand tool

- 1 Set tool to a 90° angle.
- 2 Press tool firmly onto glass.
- 3 Tilt handle up to create suction, and pull directly upwards to remove fitting.

Note: Do not twist during removal as this could damage the bezel.



GLARE CONTROL OPTIONS

/NGS No glare shield

No glare shield. Low glare optic and matt black anodised optic holder aids in glare reduction.

/GS45 Glare shield

An optional glare shield is available to further reduce glare from the LED and optic. This is useful in narrow details where people are going to walk directly over the fitting.

This does not reduce the light on the lit surface (wall) but will cut out some light onto the ceiling. Please note that the Oval beam cannot be used with GS45.



RLE - REPLACEABLE LIGHT ENGINES



What is RLE

On the surface, RLE is LightGraphix's answer to the Circular economy question that is facing many industries at the moment. However for us, RLE is an ethos; a commitment that LightGraphix will factor in the principles of good circular design into all of its future product design. It allows us to offer luminaires that contain replaceable, energy-efficient light engines. This gives customers the ability to refurbish existing lighting installations rather than having to replace the entire luminaire. This will fall into two types of refurbishments: replaceable, and repairable.

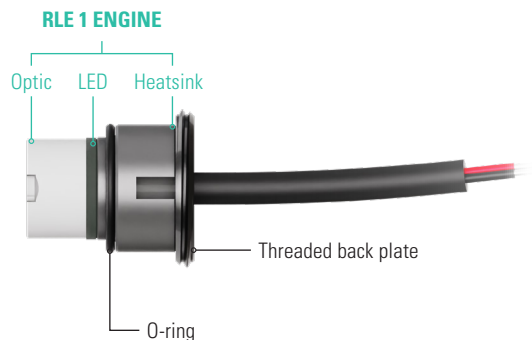
RLE Engines

Repairs can be conducted on any site worldwide, or in our factory, with a small tool. Simply swap out the singular modular LED insert, and replace it with another, along with a new optic, which are both supplied by us. The warranty provided with the product varies based on who is performing RLE repairs. There are three types of RLE engine, categorised based on the size of the product. RLE1 is the smallest, with RLE3 being the largest.



LD43DR RLE REPLACEMENT PARTS

Please use the configurator below to specify your replacement engine and optic. If you are unsure of your original specifications, please check the label on your LightGraphix fitting, or get in touch with our sales team. Installation sheets will be supplied with the new components.



RLE Engine		LED Colour		Beam Angle		Accessories	
RLE1/							
RLE 1 ENGINE	RLE1/	Super Warm White (2200K)	/LW22	Narrow beam 16mm optic	RLE/OP-16/NB	O-ring	RLE/OR2
		Extra Warm White (2700K)	/LW27			Threaded back plate	RLE/TBP
		Warm White (3000K)	/LW30				
		White (4000K) - on request	/LW40				
		Cool White (5000K)	/LW50				

ORDER CODES & OPTIONS

Example: LD43DRG-C1-500/LW30/NB/GSHM/480SG/Paint finish Black

Light Engine & Drive Current

LD43DRG - / / / / / /

LED Colour

Beam Angle

Glare shield

Fixing

Fixing Finish

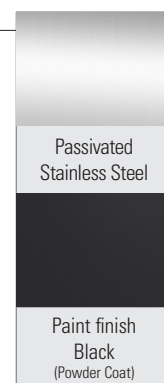
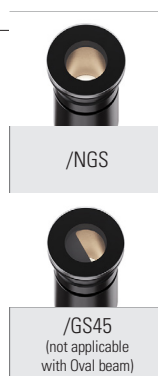
Ambient temperature key: ● 55°C



1.2W LED at 350mA	LD43DRG-C1-350
1.7W LED at 500mA	LD43DRG-C1-500
2.4W LED at 700mA	LD43DRG-C1-700

Super Warm White (2200K)	/LW22
Extra Warm White (2700K)	/LW27
Warm White (3000K)	/LW30
White (4000K) - on request	/LW40
Cool White (5000K)	/LW50

12° Narrow	/NB
------------	-----



Drivers

Use with 350mA, 500mA & 700mA constant current LED drivers

We have a range of dimmable LED drivers including DMX and DALI compatible. Please see the downloads section on our website.